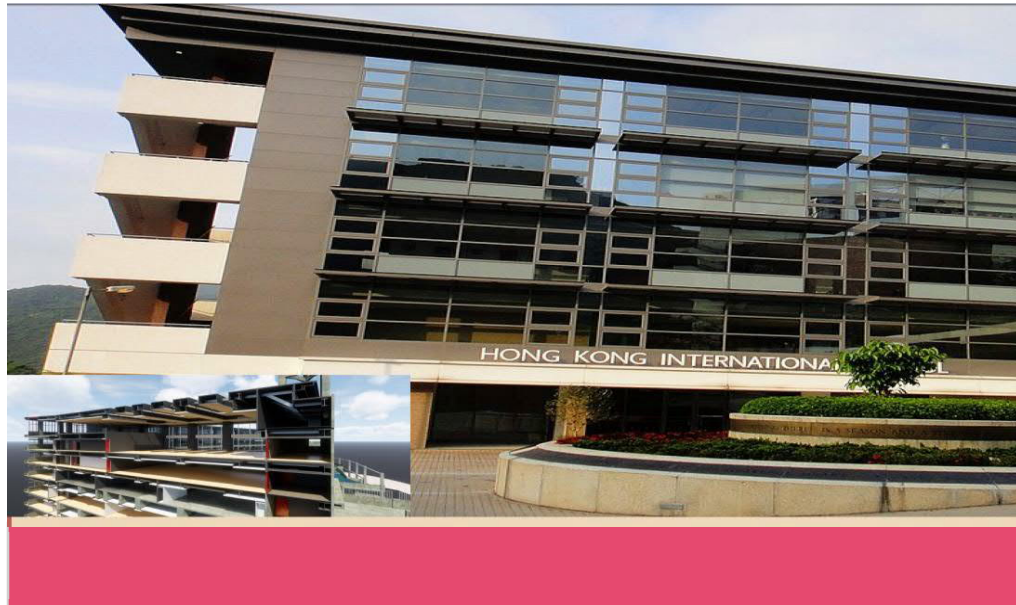


SBC Prime Projects

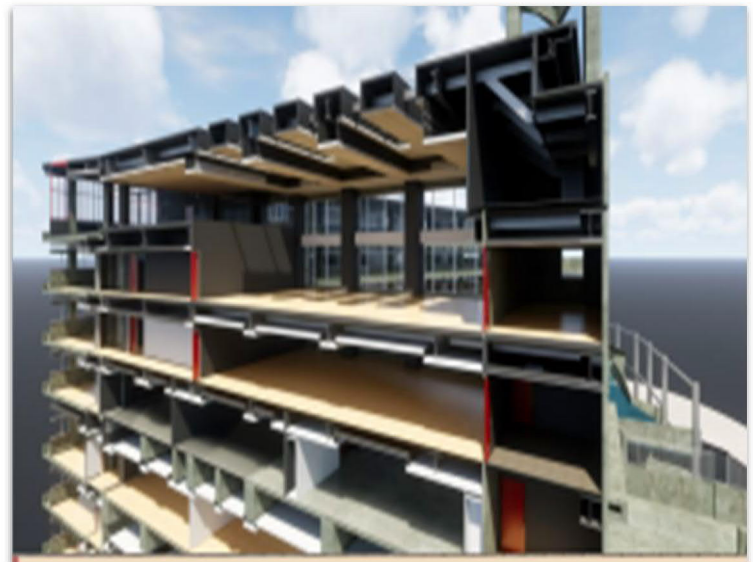


Project Area: 12,500 Sq/ft

LOCATION: HONG KONG
About:

The school is divided into four divisions, all co-educational: Lower Primary (Grades R1 and R2-Grades 1 and 2), Upper Primary (Grades 3–5), Middle School (Grades 6–8) and High School (Grades 9–12). The Lower Primary (LP) a

nd Upper Primary (UP) are housed in the original building in Repulse Bay, while the Middle School (MS) and High School (HS) are in the newer building in Tai Tam. In 2010, HKIS became a 1:1 (one laptop, one student) school, offering education in the traditional form and through technology. Each division of the school has its own administration and student government organization; the high school's is known as the Senate, the middle school's is called the Student Leadership Team, and the upper primary's is called the Student Consul.



SCOPE OF WORK

- Detailed 3D modeling of mep And architecture, preparing Shop drawing.
- Resolving the clashes Between services and Between architectural & Structural trades
- Preparing 2D shop drawing.
- Design Validation
- BOQ